


Grinder

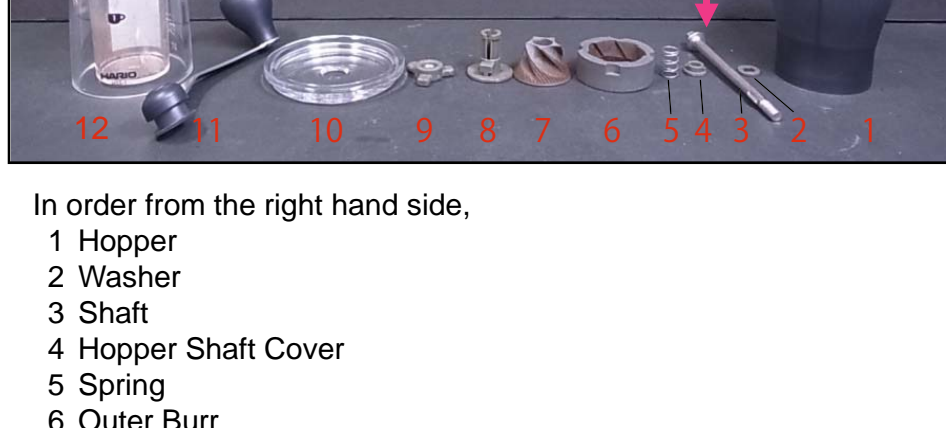
[Coffee Mill Ceramic Slim_MSS-1]

Q. How do I assemble the Coffee Mill Ceramic Slim (MSS-1)?

A. Follow the assembly instructions below.

 How to (1)-(4)

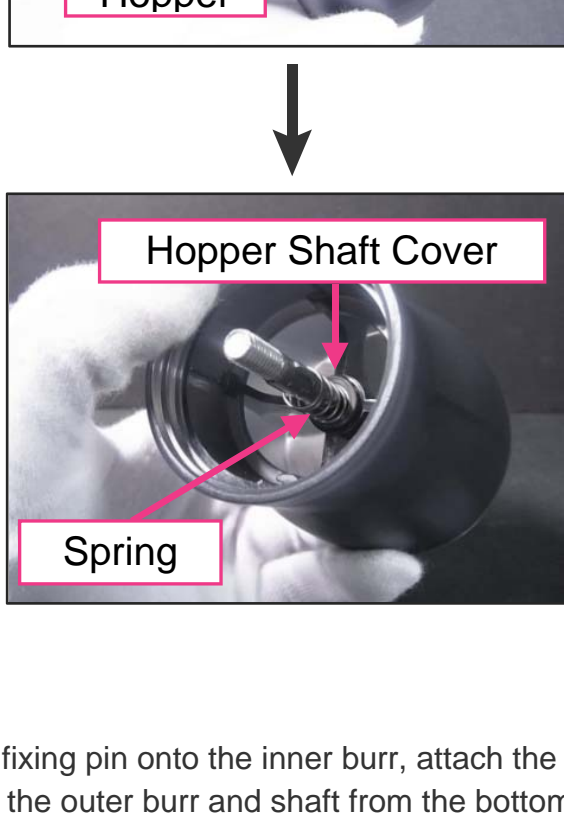
(1) Assemble the parts in the correct order.



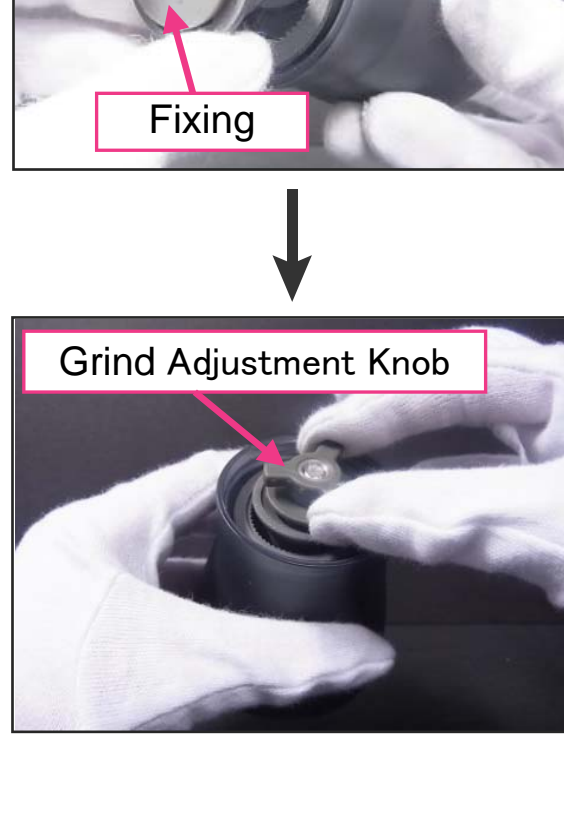
In order from the right hand side,

- 1 Hopper
- 2 Washer
- 3 Shaft
- 4 Hopper Shaft Cover
- 5 Spring
- 6 Outer Burr
- 7 Inner Burr
- 8 Setting Pin
- 9 Grind Adjustment Knob
- 10 Lid
- 11 Handle
- 12 Bottle

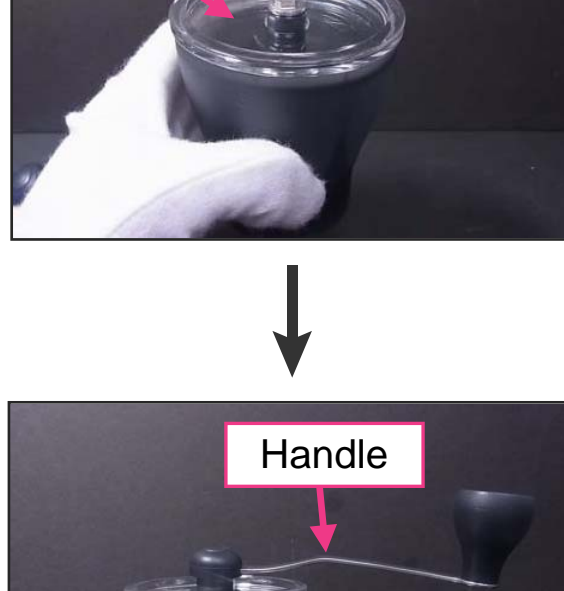
(2) Insert the washer and shaft into the hopper from the top, and slide the hopper shaft cover and spring onto the shaft from the bottom side of the hopper.



(3) Attach the fixing pin onto the inner burr, attach the inner burr and fixing pin onto the outer burr and shaft from the bottom side of the hopper, then attach the grind adjustment knob on to the shaft.



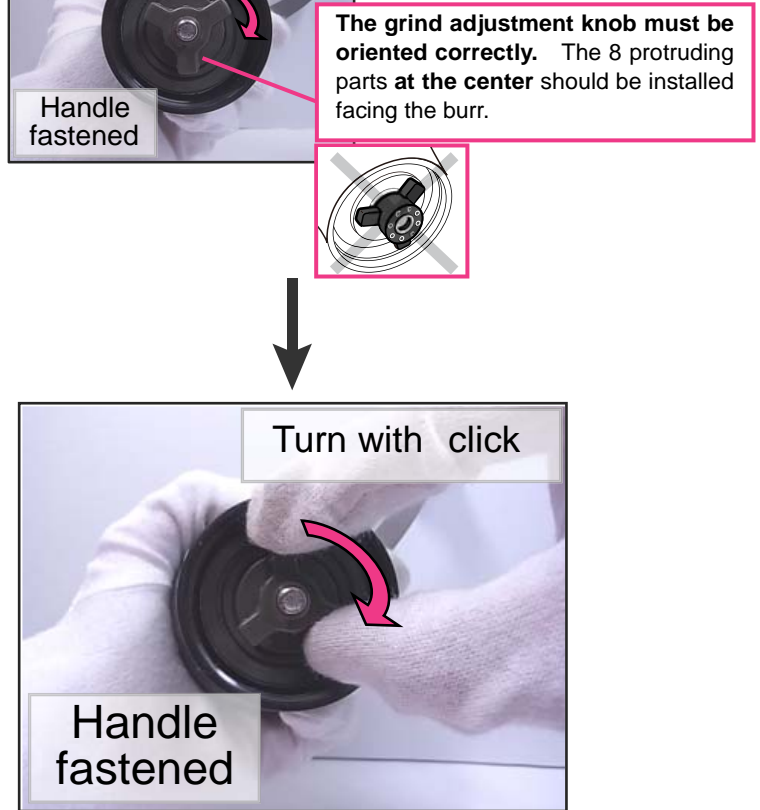
(4) Attach the lid onto the top of the hopper, then attach the handle on the shaft.



(5) With the handle attached, turn the knob to the direction for fine grind (clockwise) until you hear a click sound, then turn further to adjust to the desired coarseness by using the number of click sound as a guide. Push down on the center of the handle and turn the grind adjustment knob. Make sure that the handle is attached and hold firmly when turning the grind adjustment knob.

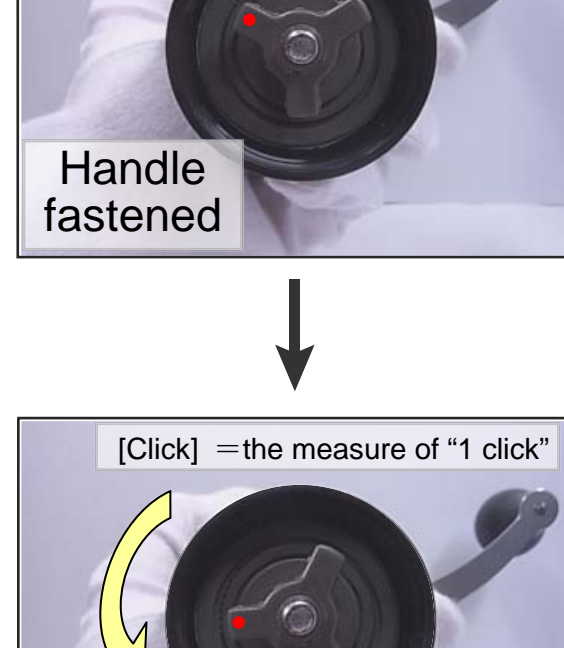


(6) While fixing the shaft in place with the handle (left hand in the photograph), rotate the grind adjustment knob in the direction to fine grind (clockwise) to tighten. You will hear the clicking sound as you do this.



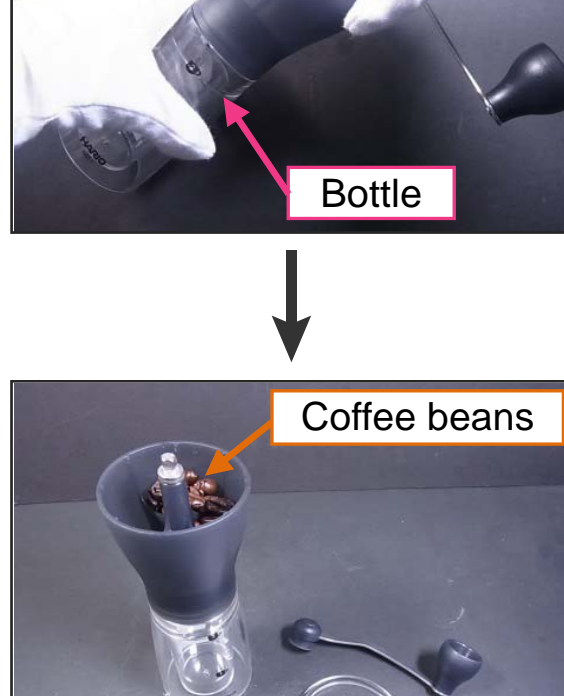
(7) Once the grind adjustment knob is completely tightened, turn it to the direction that sets it for a coarse grind (counter-clockwise) to set the desired grind according to the number of clicks.

***A click sound is heard when the adjustment knob is moved.**
[Click] = 1 adjustment



Samples				
	Fine (Approx. 0.5 to 0.8 mm)	Medium fine (Approx. 0.5 to 1.0 mm)	Medium (Approx. 1.0 to 1.5 mm)	Coarse (Approx. 1.0 to 2.0 mm)
MSS-1B <small>(Turn the grind adjustment knob to the left listening for the click sound (counter-clockwise))</small>	5 times	10 times	15 times	20 times

(8) Attach the hopper to the bottle, remove the handle and lid, and then place coffee beans into the hopper.



(9) Rotate the handle clockwise to grind the coffee beans.

